



WHITE STONE FLOORING - 18" X 36" TILES



CAESTARSTONE COUNTERTOPS IN CINDER



2-TONE COLOR COMBINATION FOR CABINETS IN DRIFTWOOD (SHOWN) & WHITE (NOT SHOWN) SEE RENDERING

## COASTAL CHIC: CONCEPT PHOTO AND SELECTED FINISHES



ACCESSORIES



ART



2-TONE SILK AND SISAL WOVEN RUG

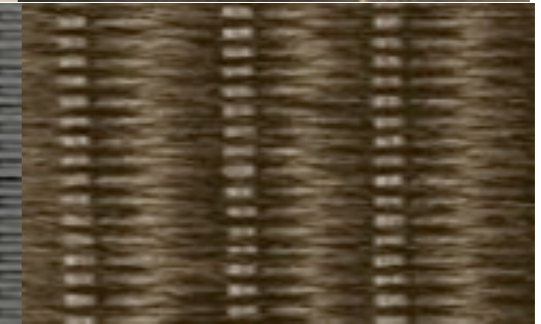
## ACCENTS



OYSTER GRAY RATTAN

## OPTION 1

- WOODEN DINING TABLE WITH SIX WOVEN CHAIRS (SEE DRAWING)
- POLISHED CHROME AND WOOD BARSTOOLS



GRAY WEAVE

CHOCOLATE WEAVE

## OPTION 2

- WOOD DINING TABLE WITH SIX WOVEN AND POLISHED CHROME CHAIRS (SEE DRAWING FOR PLACEMENT)
- WOVEN BARSTOOLS WITH WOODEN LEGS



CONCEPT RENDERING

## FURNITURE PLAN FOR RENDERING

---

### NOTES:

- PRODUCT SPECS REGARDING FINISH MATERIALS CAN BE FOUND IN THE CONTROL SHEETS

- FURNITURE DIMENSIONS:

Dining Table - 84"l x 30.75"w x 29.5"h

Option 1 Chair: h 46 CM    f 68 CM    h 59 CM    A 58 CM    h 83 CM

Option 1 Barstool - 14.5"w x 14.5"d x 31.5"h

Option 2 Chair: h 47 CM    f 67 CM    h 57 CM    A 52 CM    h 86 CM

Option 2 Barstool: h 80 CM    h 36 CM    A 37 CM    h 80 CM

Occasional Chairs: h 45 CM    f 62 CM    h 86 CM    A 75 CM    h 94 CM

